

# Learning Estate Investment Programme

LEIP- Programme Management

SCOTTISH  
FUTURES  
TRUST

## Why a programme approach to LEIP?

*A programme approach to learning estate delivery enables central programme, financial and technical expertise to set the parameters, outcomes and targets for all projects that make up the overall programme.*

*It allows better monitoring of budget, industry and trends for reporting and sharing best practice purposes.*

*The central expertise can be drawn upon by all projects to help guide, inform and promote collaboration towards delivering the best learning estate facilities in Scotland as possible.*

*Lessons can be learned from the different approaches being adopted at a local level and shared at a national level.*

# Learning Estate Investment Programme

## LEIP- Vision/Mission Statement

SCOTTISH  
FUTURES  
TRUST

### **Vision Statement**

Scotland's Learning Estate Investment Programme – *Connecting People, Places and Learning*

### **Mission Statement**

The LEIP is a joint £2bn investment programme between Scottish and Local Government designed to:

1. improve the condition of the school estate;
2. support growth projects where there are no local condition priorities;
3. establish links across the learner journey where appropriate;
4. Benefit 50,000 pupils to learn in condition A/B schools;
5. enable the delivery of wider SG policy objectives, including the guiding principles of the Learning Estate Strategy; and
6. support sustainable estate planning with clear investment and maintenance strategies

By delivering best value and contributing towards the achievement of the desired outcomes of the learning estate strategy, the investment programme will focus on delivering high quality, suitable, sustainable, low carbon and digitally enabled learning environments that support sustainable and inclusive economic growth. On a project by project basis, the programme may consider projects that support local population growth.

# Learning Estate Investment Programme

## LEIP- Outcomes and Benefits

SCOTTISH  
FUTURES  
TRUST

### Outcomes & Benefits

Over the life of this parliament and the next, investment will enable the delivery of new or refurbished learning facilities across Scotland. Outcomes to be delivered include:

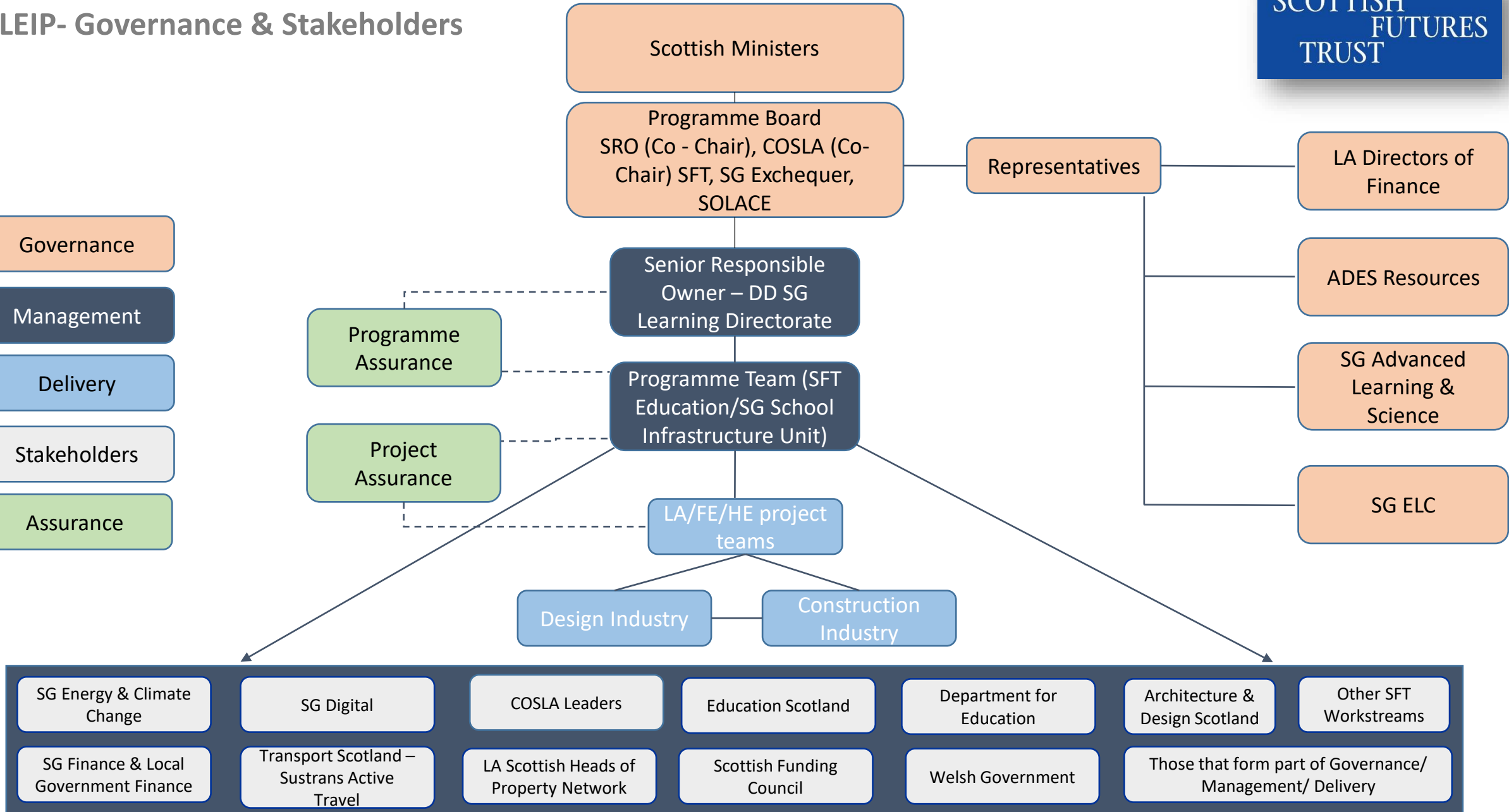
1. C. 50,000 pupils benefitting from new or refurbished learning facilities which are maintained in good condition and facilitate the delivery Scottish Government's three main education and skills priorities - Curriculum for Excellence (CofE), Getting it Right for Every Child (GIRFEC) and Developing the Young Workforce (DYW).
2. Ambitious energy efficiency targets of 67kwh/sqm/annum for all new builds.
3. Future proofed digital enablement of facilities with underlying digital infrastructure to support 1Gbps to at least one point in every learning and teaching space.
4. Support Economic Growth through the creation of jobs to deliver the facilities.
5. High quality facilities in terms of both construction and design quality.
6. Infrastructure Technology used in an effective and efficient manner to support optimum use of the facility through its lifecycle.
7. Learning Lessons from previous projects/programmes to support delivery and outcomes of this investment programme – to be done through completion of post project reports and post occupancy evaluations.

# Learning Estate Investment Programme

## LEIP- Governance & Stakeholders



- Governance
- Management
- Delivery
- Stakeholders
- Assurance



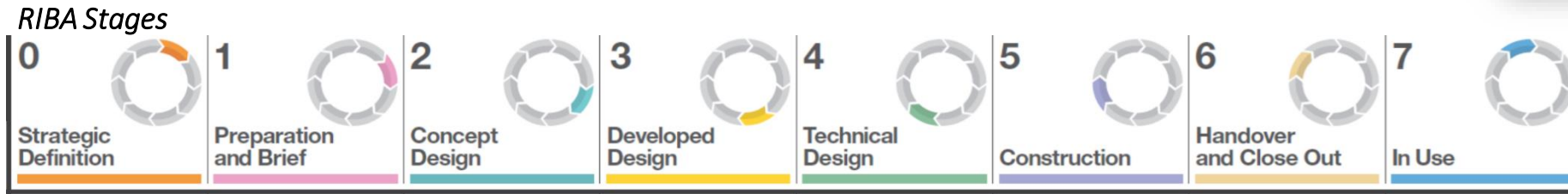
# Learning Estate Investment Programme

## LEIP- Roles & Responsibilities

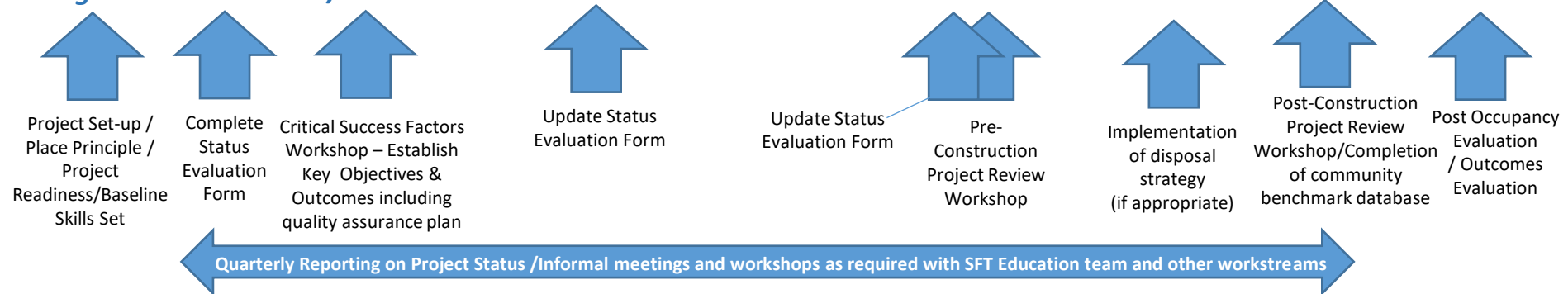
<b>Role</b>	<b>Area of Focus</b>
<b>Senior Responsible Owner</b>	<ol style="list-style-type: none"><li>1. Primary contact for engagement with Ministers</li><li>2. Establishing and effectively engaging with the Programme Board as Co Chair</li><li>3. Represents the views of Scottish Government on the board</li><li>4. Provides overall strategic guidance to the programme</li><li>5. Maintains overall financial responsibility to the programme</li><li>6. Ensure effective risk management strategies and quality assurance arrangements are in place</li></ol>
<b>Local Government</b>	<ol style="list-style-type: none"><li>1. LAs represented on the board at officer level by COSLA (co-Chair), SOLACE, DoFs/ADES Resources (attendees)</li><li>2. LA representatives will form part of the approval structure for the criteria and process for future projects to be selected as part of the programme (final decision rests with Scottish Ministers)</li><li>3. LAs responsible for procurement and delivery of projects that form part of the programme and must provide adequate reporting updates to keep the board informed of progress</li></ol>
<b>SFT</b>	<ol style="list-style-type: none"><li>1. SFT will work with LAs and SG to manage programme and support achievement of objectives and outcomes by:<ul style="list-style-type: none"><li>• Encouraging and supporting collaboration;</li><li>• Co-ordinating programme delivery within budget parameters;</li><li>• Develop and implement vfm funding models;</li><li>• Identify best means of achieving programme objectives/outcomes;</li><li>• Share best practice and lessons learned across the programme</li></ul></li></ol>

# Learning Estate Investment Programme

LEIP- Project Development Process



## Programme Milestones/Assurance



## Programme Outcomes



## Programme Funding

